



# **mvQuery Version 7**

Server Installation Guide

## Disclaimer

---

Sandri Technologies makes no warranty of any kind with regard to the material contained in this manual, including but not limited to the implied warranties or merchantability and fitness for a particular purpose.

The information contained in this document is subject to change without notice.

This document contains proprietary information that is protected by copyright. All rights are reserved. It may not be photocopied, reproduced, or translated, in whole or in part, without the prior express written consent of Sandri Technologies.

Copyright 2012 Sandri Technologies. All rights reserved.

## mvQuery Documentation

---

mvQuery Documentation includes the following guides.

### **mvQuery Tutorial**

The mvQuery Tutorial is the best starting point for the first time user of mvQuery, or to catch up with the new features when upgrading. This takes the operator step by step through each of the main sections of the mvQuery Standard Edition using the sample database provided, to install an understanding and confidence in each of the main activities of the program: building queries, working with results, designing and running reports and exporting data.

### **mvQuery User Guide**

This covers the use of the Standard Edition (SE) of mvQuery. The Guide provides detailed instructions on using mvQuery SE to build queries to return information from your MultiValue database; on the facilities available for working with and augmenting those results locally on your PC; guidance on designing and producing complex reports; and the layout and use of the Export Library to export your results. Advanced topics include the mvQuery Scripting capabilities and the use of formulae.

### **mvQuery Administrators Guide**

The mvQuery Administrators Guide teaches systems administrators and DBAs how to configure mvQuery to provide the best in performance and in usability. Topics covered include connection handling, making information available through reporting accounts, using phrases and JOINS to simplify and to standardise access to information, applying security options and basic trouble shooting and activity logging.

### **mvQuery Scripting Guide**

The mvQuery Scripting Guide contains a complete reference for using the mvQuery Scripting language as means of automating mvQuery and for providing batch and scheduled capabilities.

### **mvQuery Installation and Configuration Guide**

The mvQuery Installation and Configuration Guide covers the installation of the product, defining and sharing connection information, server side installations and testing, and configuration options for optimising the product.

### **mvQuery Sample Database**

The mvQuery Sample Database provides a quick overview of the sample database installed with the mvQuery product and used to provide example processing throughout the documentation.

### **mvQuery Formula Reference**

The mvQuery Formula Reference provides a function by function reference to the mvQuery formulae used to build local calculated columns.

## Acknowledgements

---

mvQuery is a registered trademark of Sandri Technologies

UniVerse, UniData and UniObjects are registered trademarks of Rocket Software.

PICK, Pick Systems, and Advanced Pick are registered trademarks of PICK Systems, Inc.

Access Query Language, AQL, D3 and FlashBASIC are trademarks of PICK Systems, Inc.

UNIX is a registered trademark in the United States of America and other countries, licensed exclusively through X/Open Company Ltd.

Microsoft, Windows, Windows NT, Windows 2000 and MS-DOS are trademarks of Microsoft Corporation.

Adobe and Acrobat are trademarks of Adobe Systems Incorporated.

All other company or product names mentioned are trademarks or registered trademarks of their respective trademark holders.



## Contents

---

<b>INSTALLING MVQUERY SERVER</b>	<b>6</b>
<b>Installing the Server Components</b>	<b>6</b>
<b>Creating the mvQuery Account</b>	<b>7</b>
<b>Installing the Database Server</b>	<b>7</b>
<b>Running the mvInstaller Client</b>	<b>8</b>
Accepting the Licence Agreement	9
Connecting to the Server	9
Selecting the Installation Options	10
Checking the Installation	11
Authorising mvQuery	11
Checking the Installed Version	11
<b>Using the Text Based Installer</b>	<b>12</b>
Creating the inst.bp file	12
Copy the installer setup program	12
Compile and run the installer setup program:	13
Copy the packages to the server	13
Run the INSTALLER program	14

# Installing mvQuery Server

---

From version 7 of mvQuery the installation of the server components has been streamlined. The server components for the Standard Edition, Print Server Edition and Web Server Edition are now distributed together as a single setup, and can be installed together.

Installing the mvQuery Server components is now a three step process:

- Installing the Server Components
- Installing the Demonstration Database
- Installing the mvQuery Server

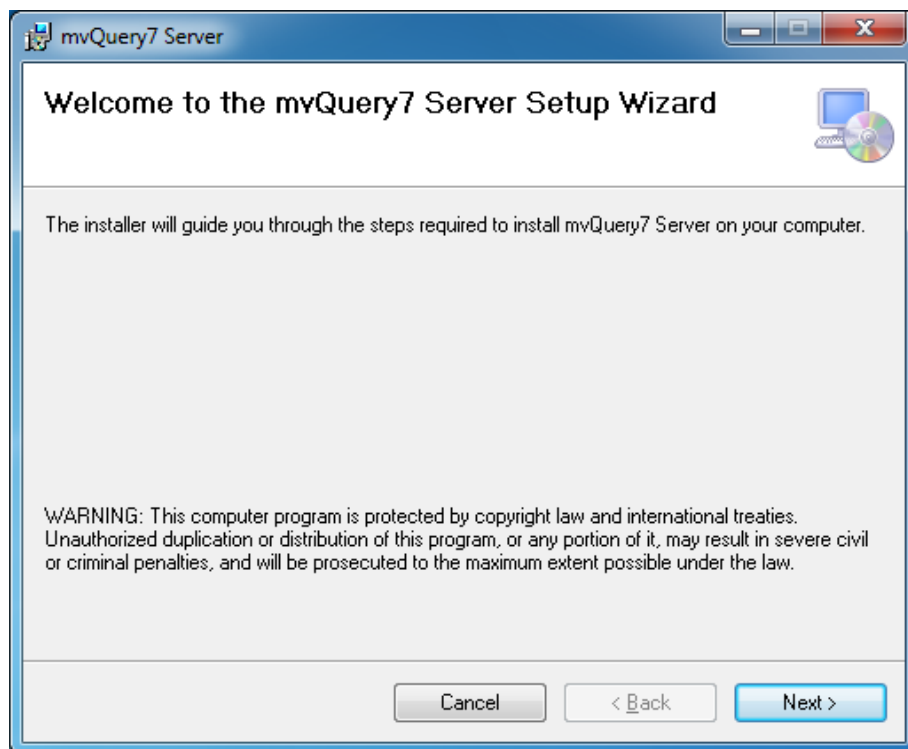
## Installing the Server Components

---

In previous editions of mvQuery, the server components were distributed alongside the three client editions. For ease of administration and for adherence to compliance requests, these are now distributed as a separate Windows setup package that also includes the installation tools for copying the mvQuery server and demonstration database to the server.

The server components are first installed onto a suitable client PC, which may also be running the mvQuery Standard Edition but no longer requires to be running this.

To install the components, copy the mvQuery 7 Server Setup to your computer and run the included setup.exe program:



## Creating the mvQuery Account

If you are installing mvQuery for the first time, you must create the mvQuery account on the database server before proceeding. The account is not created automatically by the installation tools, as this may compromise local security policies.

It is highly recommended that you name the account **mvquery**.

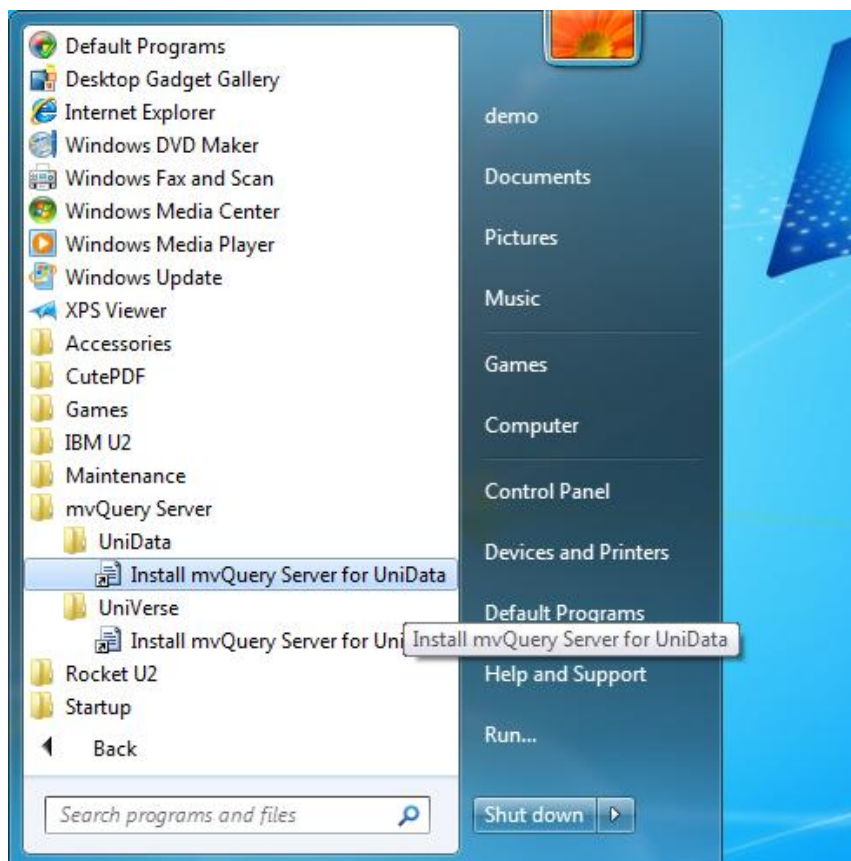
### IMPORTANT

**The mvQuery account on UniVerse must be in PICK Flavor.  
Other accounts that make use of mvQuery for reporting can be in any flavour.**

## Installing the Database Server

The mvQuery 7 Server Setup will install the mvQuery Server package, Demonstration Database package and installation tools for UniData and UniVerse servers. It will also install the UniObjects middleware for .NET.

Following a successful installation, a new folder named mvQuery 7 Server will be added to your Start Menu. This will contain subfolders for UniVerse and for UniData with shortcuts to launch the installer for the required package:

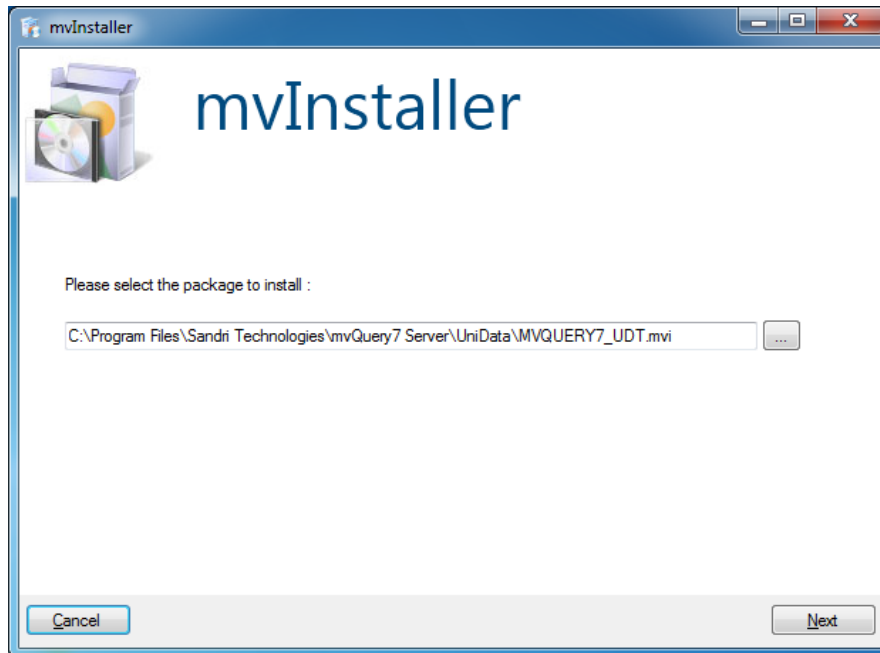


To install the mvQuery Server and the Demonstration Database for your database type, click on the appropriate link. This will start the mvInstaller client to step you through the installation. Note that from version 7 the same package now includes both the mvQuery Server and Demonstration Database.

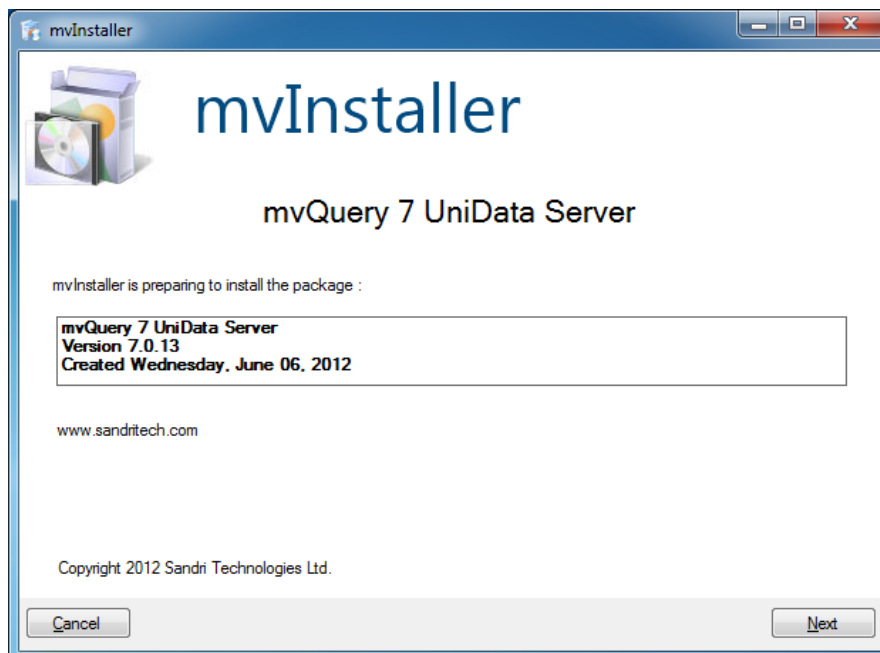
## Running the mvInstaller Client

---

The mvInstaller is provided the name of the package holding the server components to install. These generally have an 'mvi' extension:



Click the Next button to open the mvInstaller package and verify the content and version:

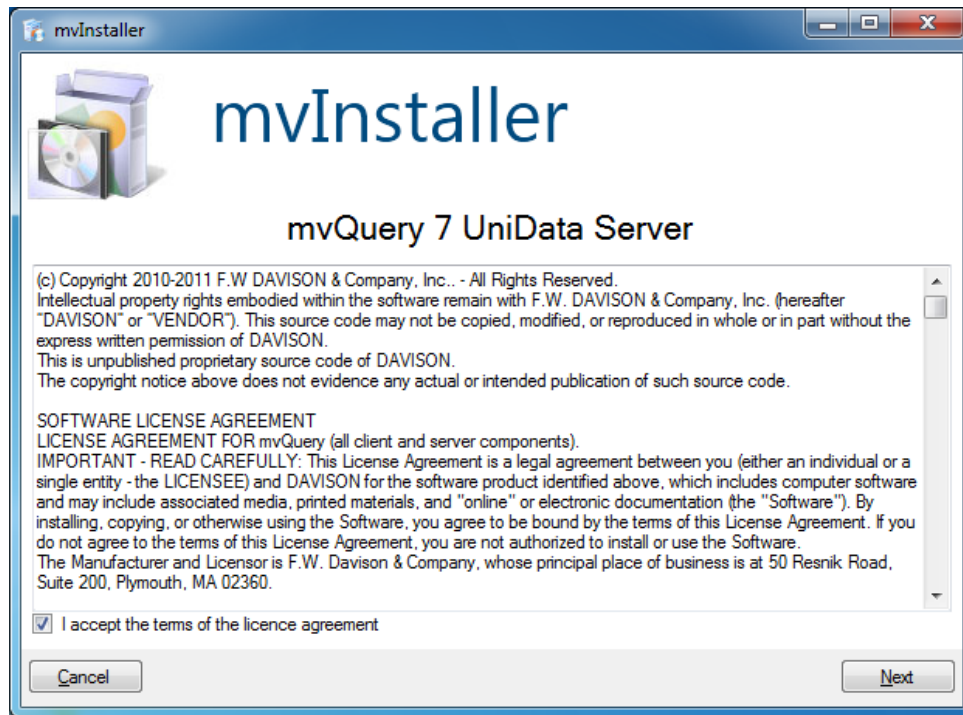




## Accepting the Licence Agreement

---

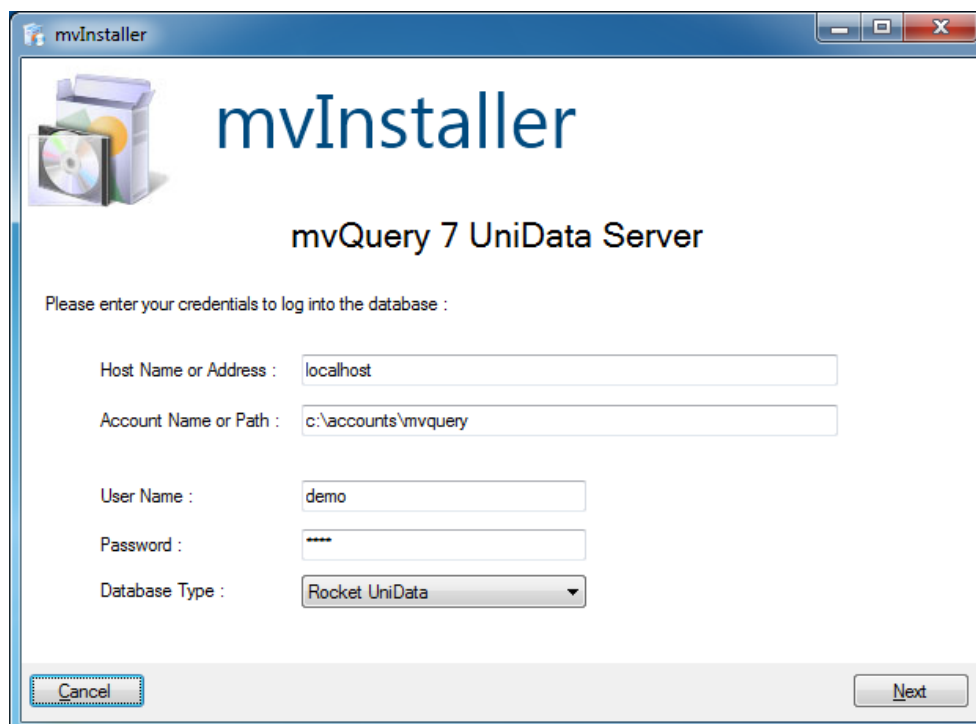
Before installing the mvQuery Server you must signal your acceptance of the license agreement. If you do not agree with the license you must terminate the installation.



## Connecting to the Server

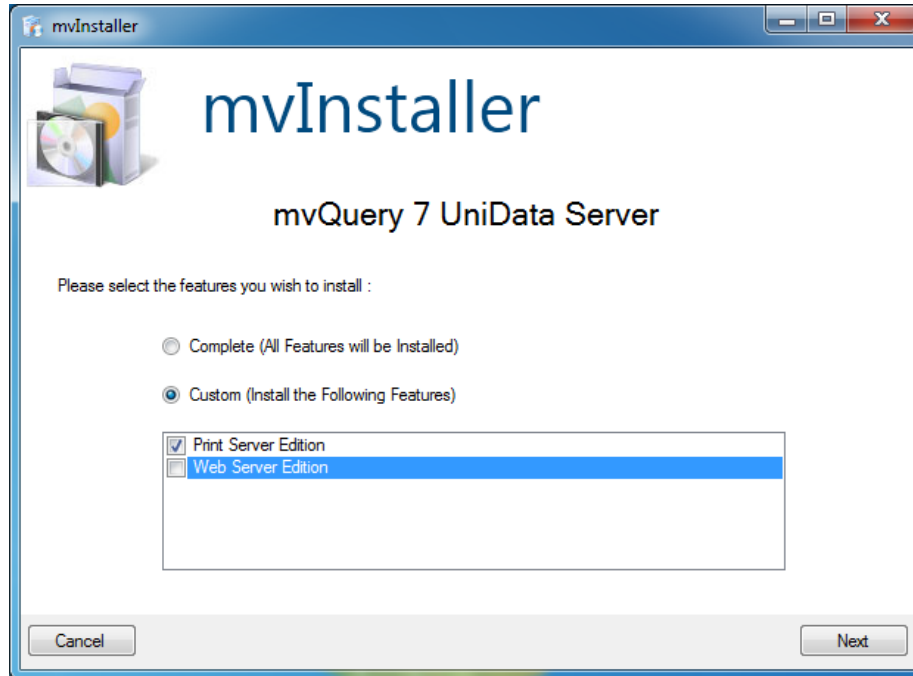
---

Once you have accepted the licence agreement, you can proceed to connect to your database server. Enter your user credentials for the database server and the location of your mvQuery account:



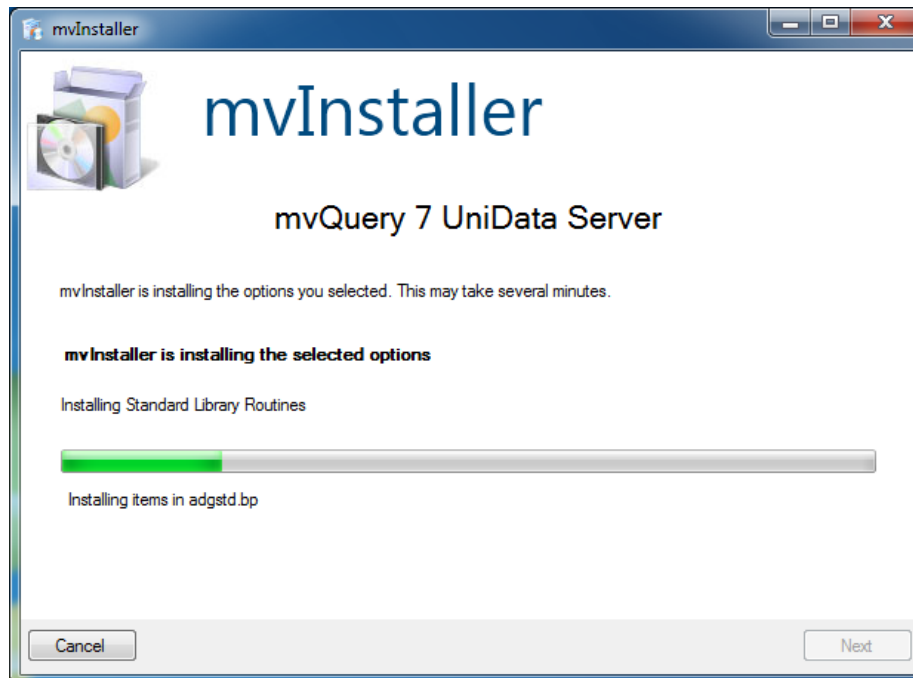
## Selecting the Installation Options

The mvQuery Server Package now includes all core components used by mvQuery and also provides the option to install the Print Server and Web Server components. These can be installed whether or not you have a licence for Print Server and/or Web Server, and it is recommended that you do so.



### Running the Installation

Once you have selected the options to install, mvInstaller will automatically start the installation, displaying a progress bar to indicate how far it is through the installation procedure.



## Checking the Installation

---

Once the installation has completed, it is recommended that you test the installation by logging into the mvQuery account and entering the command:

### **qusane**

This will run a set of sanity checks to ensure that all the mvQuery components are correctly installed and configured.

## Authorising mvQuery

---

The final step in preparing the mvQuery server for use is to enter the authorisation code(s) to enable standard edition, print server and web server operations.

To enter an authorisation code, enter the command:

### **quauth**

This will prompt you for the authorisation code to enter.

## Checking the Installed Version

---

If you are upgrading an older copy of mvQuery it is recommended that you perform a version check after the update to ensure that no permissions problems have prevented mvQuery from cataloging the new routines.

The quversion command will display the currently installed version.

### **quversion**

## Using the Text Based Installer

---

As an alternative to the Windows based installer, you can also use the text based version of mvInstaller to install the mvQuery server, though this requires more work.

To use the text based installer you must complete the following operations:

### Creating the inst.bp file

---

Create a file named inst.bp in the mvQuery account, for example

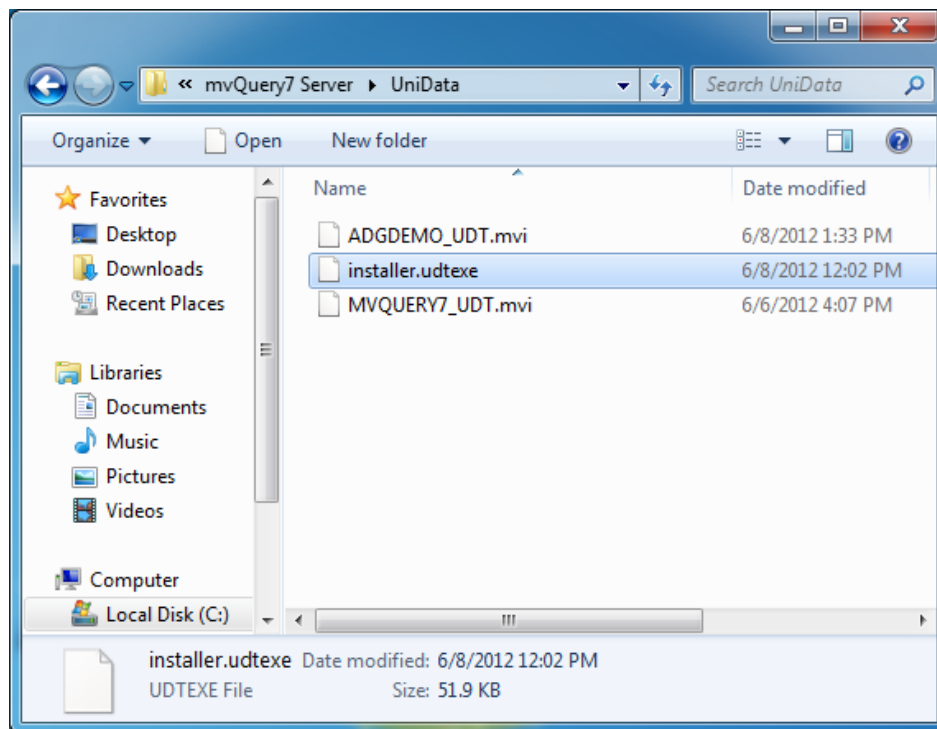
```
(UniVerse)
CREATE.FILE inst.bp 1,1 1,1,19
```

```
(UniData)
CREATE.FILE DIR inst.bp
```

### Copy the installer setup program

---

Locate the installer setup program on the client and copy it into the inst.bp directory on the server using any suitable route.



(UniVerse)

This is the installer.uvexe file in c:\Program Files\Sandri Technologies\mvQuery 7 Server\UniVerse.

(UniData)

This is the installer.udtexe file in c:\Program Files\Sandri Technologies\mvQuery 7 Server\UniData.

## Compile and run the installer setup program:

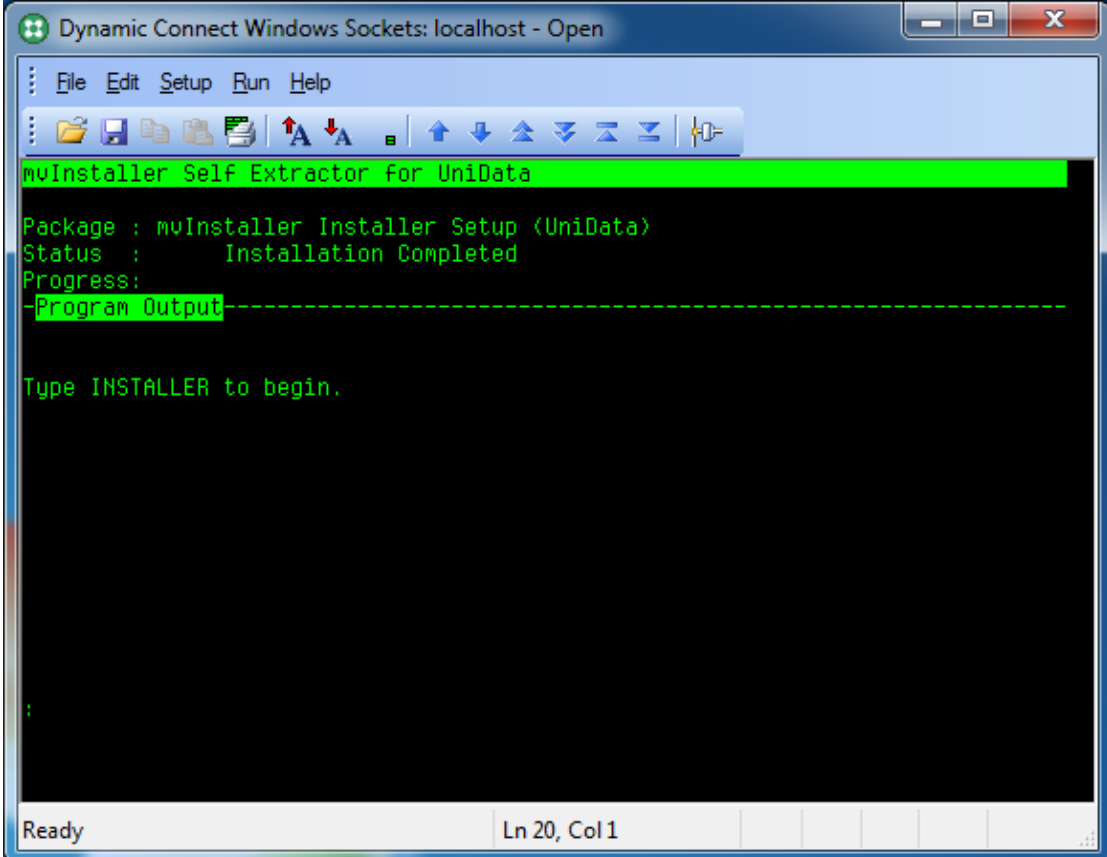
---

(UniVerse)

```
BASIC inst.bp installer.uvexe  
RUN Inst.bp installer.uvexe
```

(UniData)

```
BASIC inst.bp installer.udtexe  
RUN inst.bp installer.udtexe
```



```
Dynamic Connect Windows Sockets: localhost - Open  
File Edit Setup Run Help  
mvInstaller Self Extractor for UniData  
Package : mvInstaller Installer Setup (UniData)  
Status : Installation Completed  
Progress:  
-----  
Type INSTALLER to begin.  
Ready Ln 20, Col 1
```

This will install a new program called INSTALLER, which holds the mvInstaller text based installer.

## Copy the packages to the server

---

Copy the required setup package to your server. IMPORTANT: This must be a binary copy.

(UniVerse)

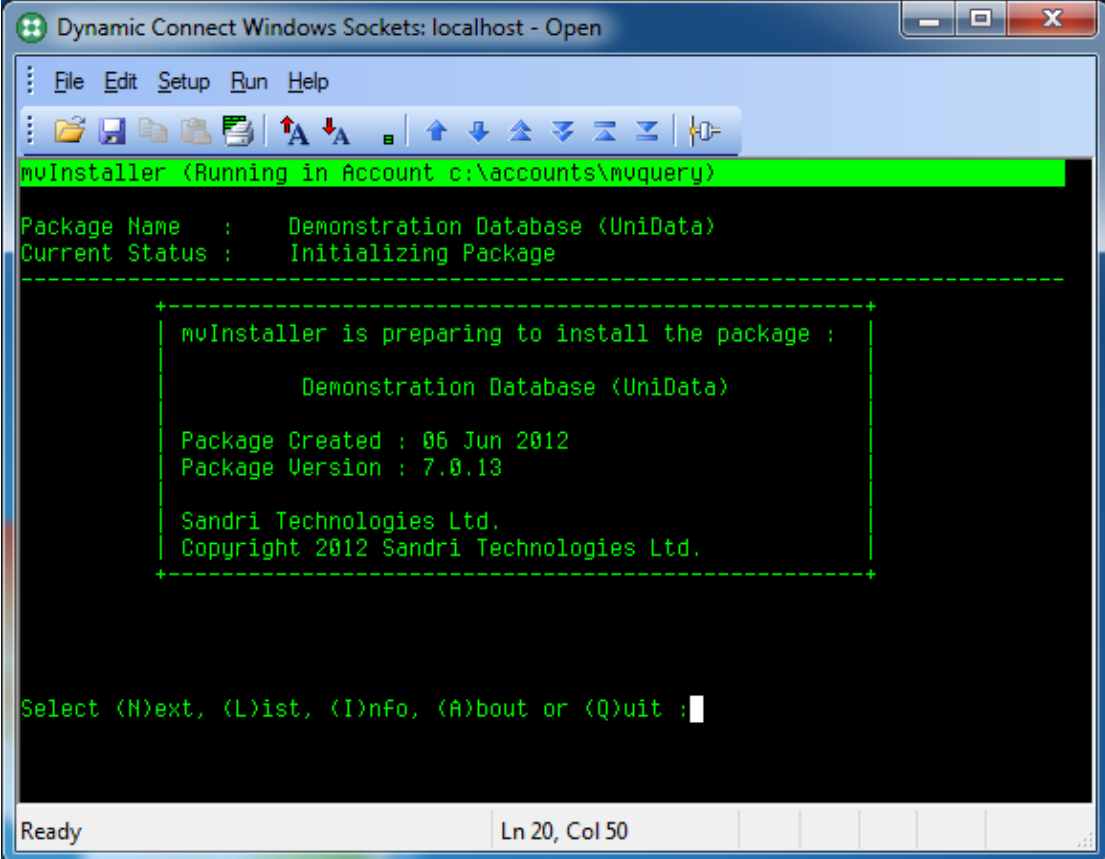
This is the MVQUERY7\_UV.mvi file.

(UniData)

This is the MVQUERY7\_UDT.mvi file.

## Run the INSTALLER program

Run the INSTALLER program and when prompted enter the path name to the mvi file:



```
Dynamic Connect Windows Sockets: localhost - Open
File Edit Setup Run Help
mvInstaller (Running in Account c:\accounts\mvquery)
Package Name : Demonstration Database (UniData)
Current Status : Initializing Package
-----
+-----+
| mvInstaller is preparing to install the package : |
|           Demonstration Database (UniData)       |
| Package Created : 06 Jun 2012                     |
| Package Version : 7.0.13                          |
| Sandri Technologies Ltd.                          |
| Copyright 2012 Sandri Technologies Ltd.           |
+-----+
Select (N)ext, (L)ist, (I)nfo, (A)bout or (Q)uit : 
```

The text based installer offers the same options as the Windows client installer, so you can follow through the steps using the Next option.