

# **mvQuery Version 7**

## **What's New**

## Contents

mvQuery Version 7.....	1
What's New.....	1
Introduction .....	3
General Changes.....	4
Platform Support .....	4
Database Connectivity .....	4
Streamlined Installation.....	4
Standard Edition.....	6
Export Library .....	7
Print Server Edition.....	8
Print Server Manager.....	8
Web Server Edition .....	9

## Introduction

**mvQuery 7** is the most significant release of mvQuery since version 3.

Following the acquisition of the mvQuery family of products by Sandri Technologies (part of FW Davison) version 7 has seen a complete ground-up re-architecting of the product and a rebranding of the product and associated materials.

This redevelopment has seen the removal of large volumes of legacy code and an entirely new user interface. The new product is built against the Microsoft .NET framework to improve the user experience and performance throughout.

Whilst most of the changes have been made under the hood, this has realized some immediate benefits to existing mvQuery users as well as positioning mvQuery as a solid product well into the future.

This document describes some of those benefits.

## General Changes

The product set has been fully re-architected from the ground up to deliver a more engaging and modern experience to mvQuery users and to form a solid platform for future releases.

## Platform Support

The new architecture now fully supports Windows 7 and Windows 2008 Server running in 32 and 64 bit modes as well as retaining legacy support for Windows Vista and Windows XP.

The product is based on the Microsoft .NET framework 4.0 and high performance native code for resultset, memory, print and reporting services.

At this version the locations of stored queries, files and settings have been altered to match the new requirements laid down by Microsoft for Windows Vista, XP Service pack 3, Windows 7 and Windows 2008.

Reliance on the registry has been almost entirely removed with only the main drivers now registered for COM interop and the OleDb interface to mvQuery SE retained. The Export Library is now a core element of the product and exports are loaded directly through the .NET framework.

## Database Connectivity

Database connectivity to UniVerse and to UniData is now handled exclusively through UO.Net.

This means that the products now support device licensing to minimise the consumption of database licenses when running Standard or Print Server editions.

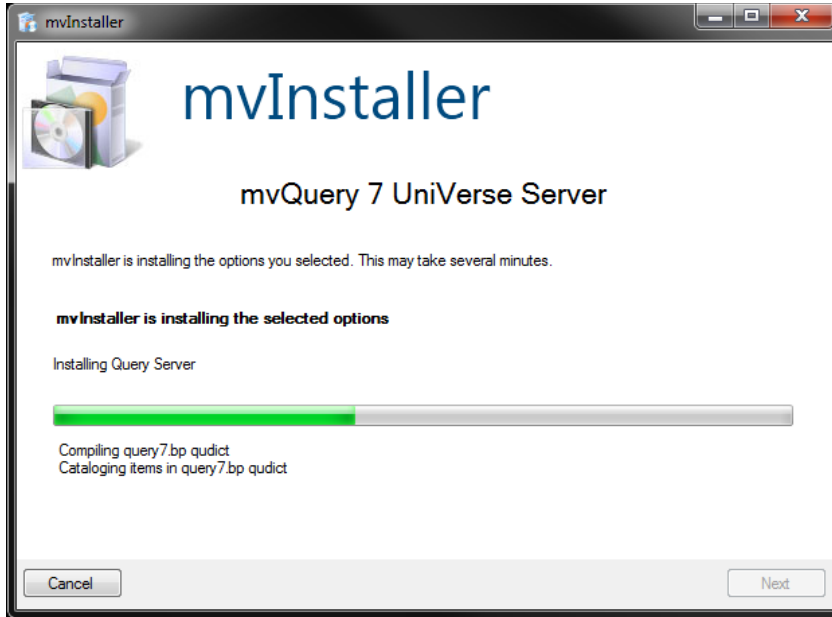
Support for D3 and for jBase has been removed from version 7.

## Streamlined Installation

A new streamlined installation process makes it easier to deploy mvQuery and its updates.

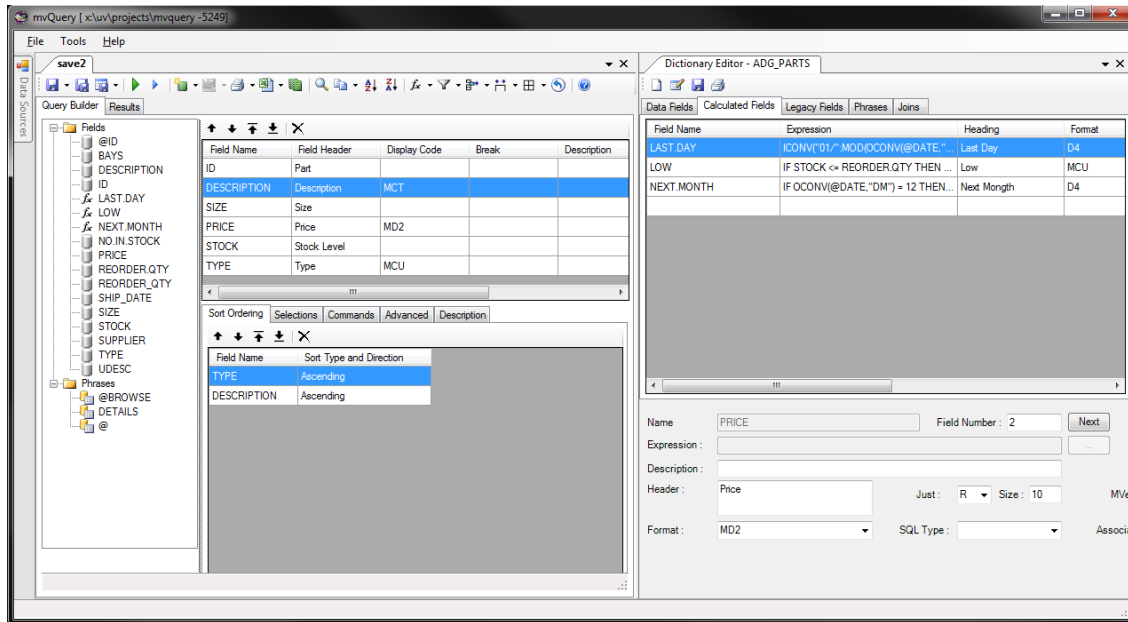
The UO.NET libraries are bundled with the product, removing the need to separately install UniDK with mvQuery clients. The client setups now run using the standard Microsoft .NET installer and include the necessary frameworks.

Server side installations are now packaged for use with mvInstaller, allowing the server to be deployed from either text or Windows based installers.



## Standard Edition

The Standard edition has been redesigned to appeal to a modern audience with improved look and feel and a more fluid workflow.



### Standard Edition

The Standard Edition now features a tabbed, docking framework that integrates formerly separate elements such as the query parser and script editor. The query design layout has been changed to make the structure of the query more apparent and the options panel has been removed in favor of a more accessible tabbed layout. The Data Sources can be pinned or hidden to maximize the available workspace.

A new dictionary editor replaces the old dictionary view and integrates into the docking framework, allowing you to see the query and its dictionary side by side.

The Query parser and Script Assistant have been integrated with syntax highlighting and improved editing support.

The Open and Save dialogs have been rewritten to give a better view of the file system and now defaults to the Microsoft recommended locations for storage and settings on the various supported platforms.

The underlying architecture has been rebuilt to better support large result sets, to offer improved memory management and for closer integration of formulae and other result set operations. The restrictions on cell content limits have been eased.

## Export Library

The Export Library has been rewritten as an integrated set of dedicated libraries using the Microsoft .NET framework. This removes the need to separately install the export library and the reliance on the registry for finding exports.

The new export library supports the same targets and options as were available for previous versions.

The export library adds support for OpenXML as the preferred route for generating Microsoft Office documents. Using the OpenXML exports removes the need to have copies of Microsoft Word and/or Microsoft Excel on the machine running the exports as the documents are build directly by the exports without using the Microsoft Office components.

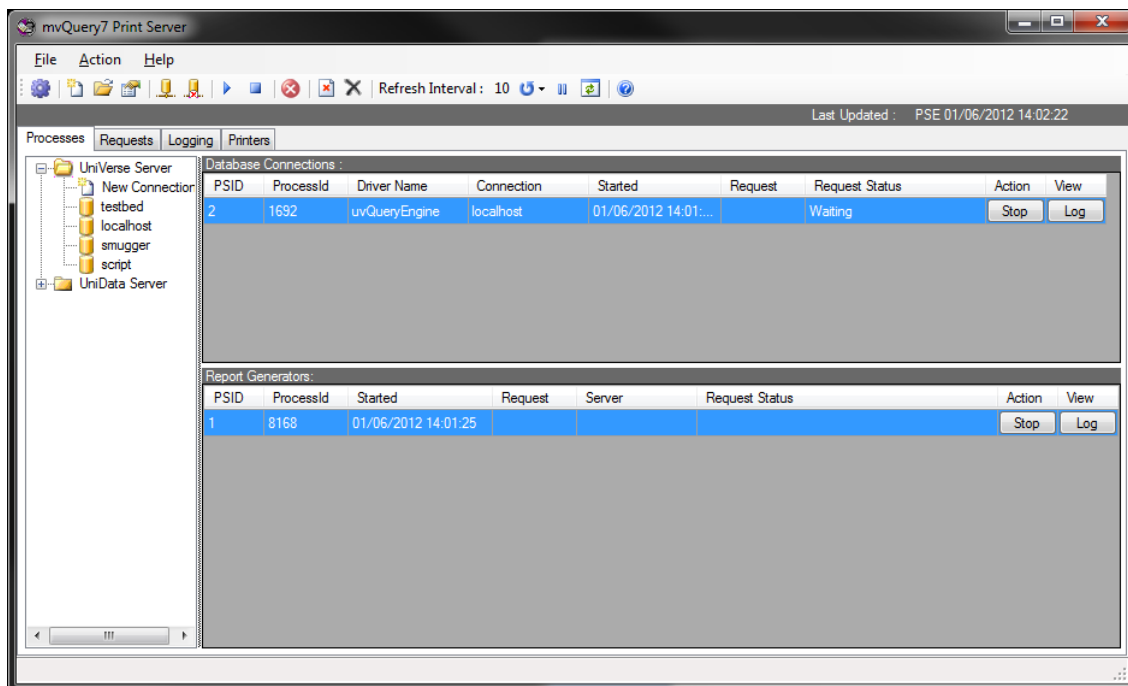
A new Export to Acrobat Form makes it possible to export to Adobe PDF using an Acrobat Form as a template.

## Print Server Edition

The Print Server edition has been redeveloped to run as an unattended service application. This removes the need to run the PSE controller on a console and allows PSE to be more easily managed. PSE now includes restart logic in the pollers and printer list refreshing in the producers, reducing the number of times that PSE needs to be restarted.

## Print Server Manager

A new Print Server Manager has been added to control and view the Print Server operations in real time. This replaces the old console and can be run remotely from any desktop with network access to the print service. Using the Print Server Manager you can add or remove pollers and producers, keep an eye on operations and commit queries.



If you are running with Web Server Edition, management of the Web Server Folders, Users and Queries are also now performed client side using the Print Server Manager.

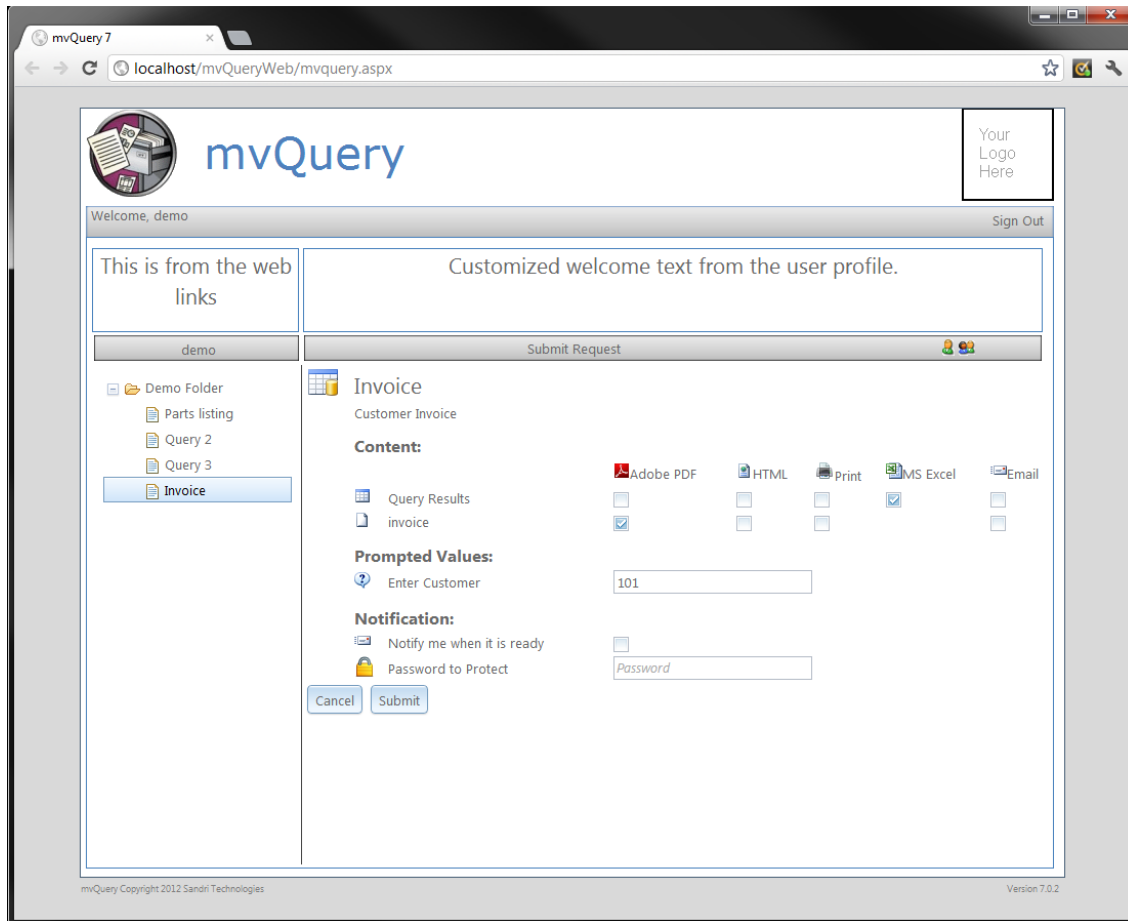
Other changes include email notifications that now use regular SMTP in place of the older Microsoft Mail interface, and new actions for producing result set output.



## Web Server Edition


The Web Server Edition has been redesigned to offer a fresher and cleaner interface.

The web Server Edition now uses a fully AJAX driven web service architecture to deliver a customizable bright and engaging experience for your internet or intranet users.



Internal users can now request printed reports through the website as well as requesting Adobe PDF and HTML format for results and reports. A redesigned status listing makes it easier for users to navigate their requests and to directly view their reports.

mvQuery 7  
localhost/mvQueryWeb/mvquery.aspx



# mvQuery

Your Logo Here

Welcome, demo Sign Out

This is from the web links

Customized welcome text from the user profile.

demo

- 📁 Demo Folder
  - 📄 Parts listing
  - 📄 Query 2
  - 📄 Query 3
  - 📄 Invoice

Report List page 1/3

status	Id	Query Name	Description	Submitted	Status	View
Detail						
	563	invoice	Customer Invoice	06/01/12 13:17	Queued	
	Export Results Results PDF Report invoice Print Report					
<input checked="" type="checkbox"/>	562	invoice	Customer Invoice	04/12/12 15:32	Completed	<a href="#">Results</a>
	PDF Results					
<input checked="" type="checkbox"/>	561	invoice	Customer Invoice	04/12/12 15:23	Completed	<a href="#">Results</a>
	PDF Results					
<input checked="" type="checkbox"/>	560	invoice	Customer Invoice	04/12/12 15:16	Completed	<a href="#">Results</a>
	PDF Results					
<input checked="" type="checkbox"/>	559	invoice	Customer Invoice	04/12/12 15:15	Completed	<a href="#">Results</a>
	PDF Results					
<input checked="" type="checkbox"/>	558	invoice	Customer Invoice	04/12/12 15:13	Completed	<a href="#">Results</a>
	PDF Results					
<input checked="" type="checkbox"/>	557	invoice	Customer Invoice	04/11/12 11:44	Completed	<a href="#">Results invoice</a>
	Error : uPDF Results PDF Report invoice Print Report					
<input checked="" type="checkbox"/>	556	invoice	Customer Invoice	04/11/12 10:18	Completed	<a href="#">Results</a>
	Export Results Results					
<input checked="" type="checkbox"/>	555	invoice	Customer Invoice	04/11/12 10:12	Completed	<a href="#">invoice</a>
	HTML report invoice					
<input checked="" type="checkbox"/>	554	invoice	Customer Invoice	04/11/12 10:08	Completed	<a href="#">Results</a>
	Export Results Results					

mvQuery Copyright 2012 Sandt Technologies Version 7.0.2